

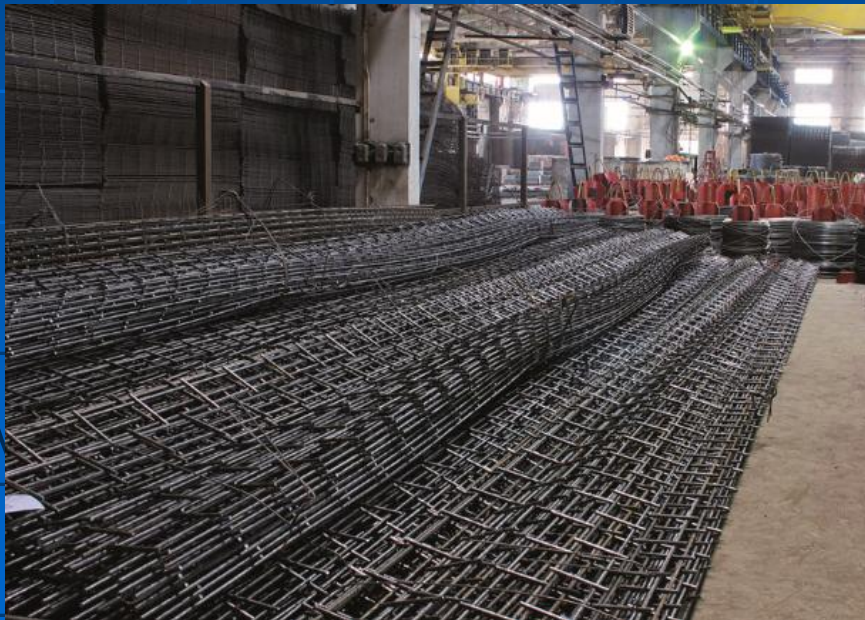


Development Corporation “LenStroyDetal” Manufacturing Capabilities and Key Customers

St. Petersburg
2017

Production

- Welded reinforcing mesh and frames
- Stirrup bending products



ZAO SK LenStroyDetal

is the leading manufacturer of welded reinforcement products :

- 7 semiautomated and 1 automated lines
- 4 500 ton/month production capacity
- 2 500 ton/month of shipped products
- Over 10 years on construction market

Welding line EVG - ATT10/126



Welding line EVG-HFBE



Finnish and Swedish companies, we
working together in Russia





Residential Complex “Magnifika”.

Reinforcing mesh for floor reinforcement





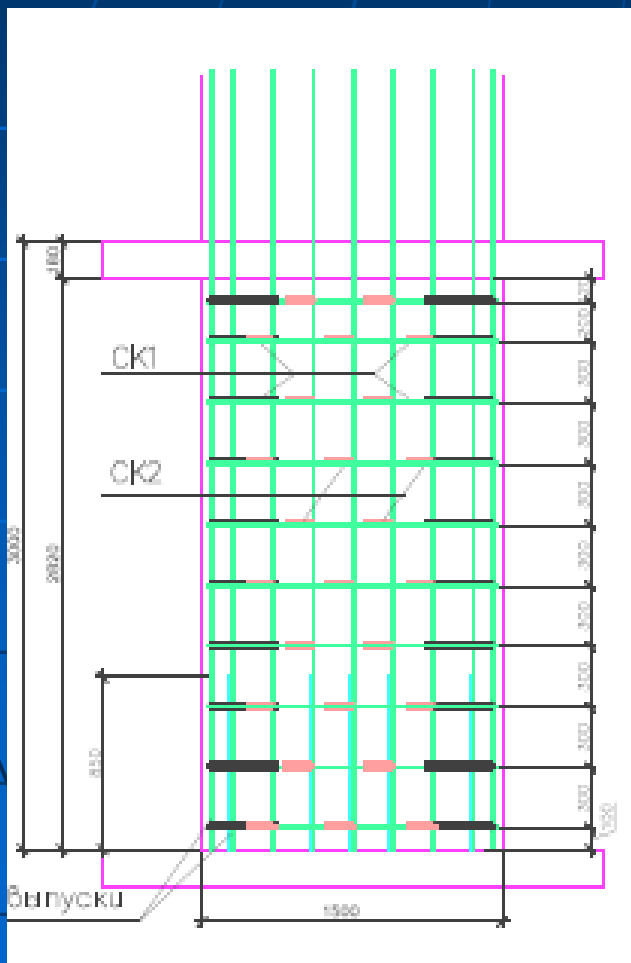
Residential Complex “Magnifika”.

Wall panels reinforced by LenSroyDetal mesh



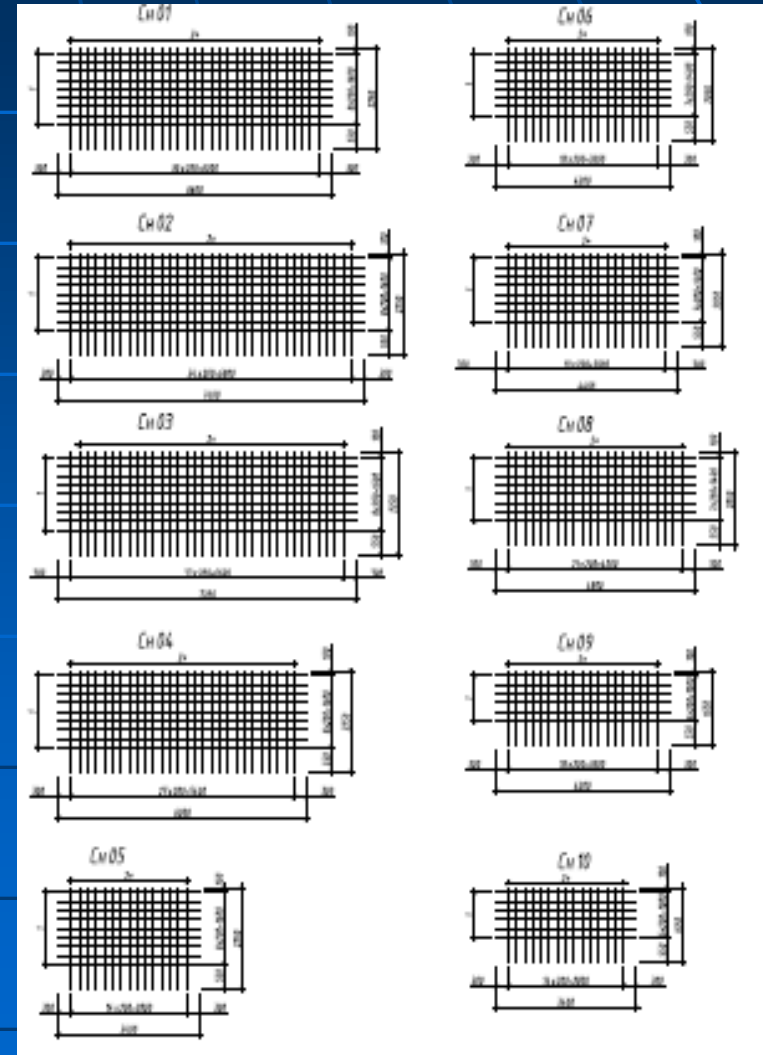


Residential Complex “Novoorlovskiy”. Reinforcement of partition walls



Lemminkäinen

Residential Complex “Rantala”
(City of Sosnovy Bor).
Reinforcing mesh for
reinforcement of walls and
floors



Lemminkäinen

Residential Complex “Tapiola”. Reinforcing mesh for reinforcement of floors

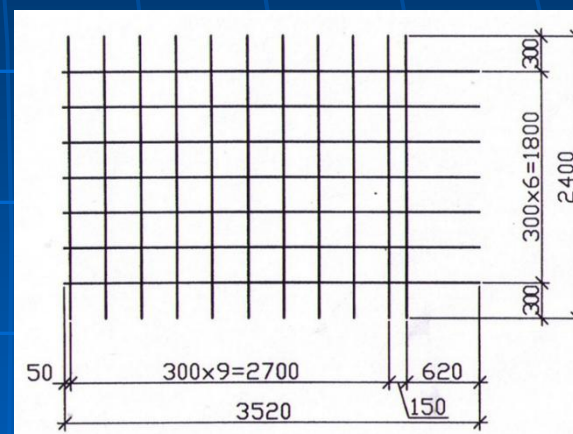




Company
"MASTER".
Residential
building.
Reinforcing
mesh for walls
and floors

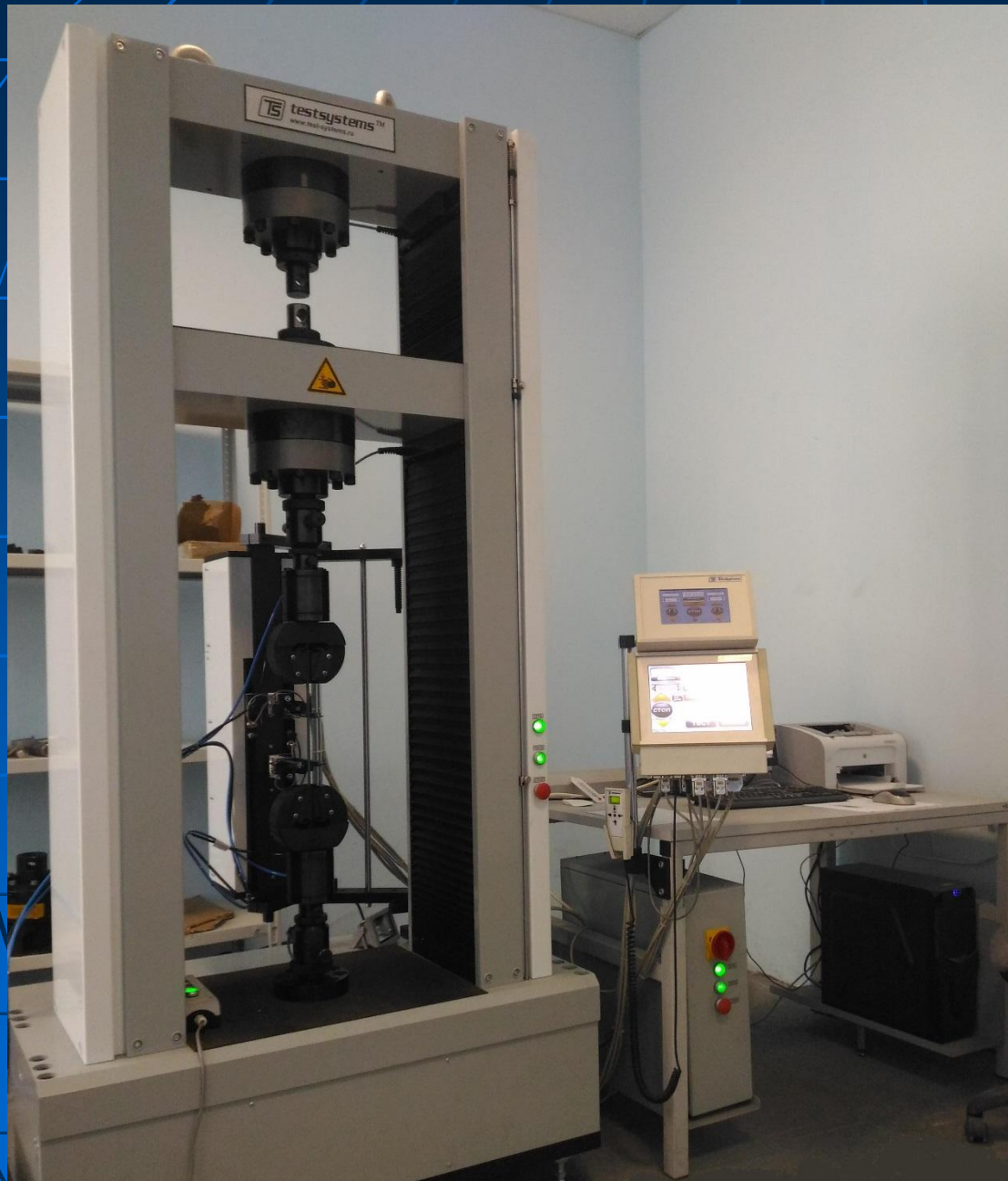


Residential Complex “Galaktika”. Mesh for reinforcement of walls




Guideline Documents on Reinforcement for designers and builders





The Testing Laboratory is equipped with state-of-the-art equipment and software-and-hardware complex.

Certificate of STF

 TYPE APPROVAL DECISION
Nr 9925-01

Inspecta

1 (2)

The type approval body **Inspecta Sertifointi Oy** has issued a type approval decision based on the Act on the Type Approval of Certain Construction Products (954/2012) to demonstrate that the product meets the requirements of the documents **Ympäristöministeriön asetus hitsattavien betonierästen ja betonieräsvierkköjen olennaisista teknisistä vaatimuksista 125/2016** (Ministry of the Environment Decree on essential technical requirements of weldable reinforcing steel and mesh reinforcements) and **Ympäristöministeriön asetus hitsattavien betonierästen ja betonieräsvierkköjen tyyppihyväksynnästä 126/2016** (Ministry of the Environment Decree on type approval of weldable reinforcing steel and mesh reinforcements). The decision concerns the following product:

Reinforcement mesh B500A-SF55, diameters 6 - 10 mm

The characteristics of the product are as follows:

- Characteristic value of offset limit 500 MPa
- Characteristic value of breaking yield ratio 1,05
- Characteristic value of overall uniform elongation 2,5 %
 - Linear density: meets the requirements
- Weldability and long-term durability: meets the requirements
 - Adhesion: meets the requirements
 - Welding class SF55

The product is designed to be used for the reinforcement of load-bearing concrete structures.

The technical properties of the product have been type tested in the extent presented in standard **SFS 1300:2014**, and the factory's internal production quality control system meets the requirements of the standard.

Manufacturer of the product:

Joint-stock company "SK "LenStroyDetal"
ul. Sedova 6, 192019 Saint Petersburg

Manufacturing place of the product: Saint Petersburg, Russia

The type approval decision has been made on 2017-07-14.
The decision is in effect until 2022-07-14.



Mikko Törmänen, Managing Director


The type approval decision is based on the initial production inspection and the testing commissioned by the type approval body. The decision is in effect provided that the requirements included in the General Rules for Product Certification and the above-mentioned regulations and documents are continuously met. The quality control certifier mentioned in the annex continuously monitors the internal production quality control carried out by the factory and performs selection and testing of random samples. If the product is transferred to the scope of the CE marking, the type approval expires. The validity of the decision can be checked at www.inspecta.fi



Inspecta Sertifointi Oy
P.O. Box 1000, Sörnäistenkatu 2
FI-00581 Helsinki, Finland
Tel. +358 10 521 600

Group headquarters: Inspecta Group Oy, Helsinki, Finland

TRUST & QUALITY www.inspecta.com

 TYPE APPROVAL DECISION
Nr 9925-01

Inspecta

2 (2)

Identification of the product: The product or its identification tag must include the type approval mark, product marking **B500A – SF55**, name of the manufacturer, manufacturing place as well as identification number of the type approval decision. The product must have a rolled manufacturer's mark. The manufacturer's mark is 9/1 + permanent identification of producer in every mesh.

The quality control certifier of the product is **VTT Expert Services Oy**, Espoo.
Date of the quality control agreement: 14.7.2017.

The inspection visit and testing reports that the decision is based on:

VTT-Q-00621-06-16, VTT-S-03088-17, VTT-S-03130-17, VTT-S-03752-17, SERAV0740

Inspecta Sertifointi Oy
P.O. Box 1000, Sörnäistenkatu 2
FI-00581 Helsinki, Finland
Tel. +358 10 521 600

Group headquarters: Inspecta Group Oy, Helsinki, Finland

TRUST & QUALITY www.inspecta.com

Contacts

Address of production facilities:

5th Verkhniy Proezd 16, Parnas
Industrial Area, St.Petersburg,
Russian Federation

Phone: +7(812)449-23-51;
+7(812)449-23-50

E-mail: lenstroydetal@gmail.com

<http://lenstroydetal.com/>